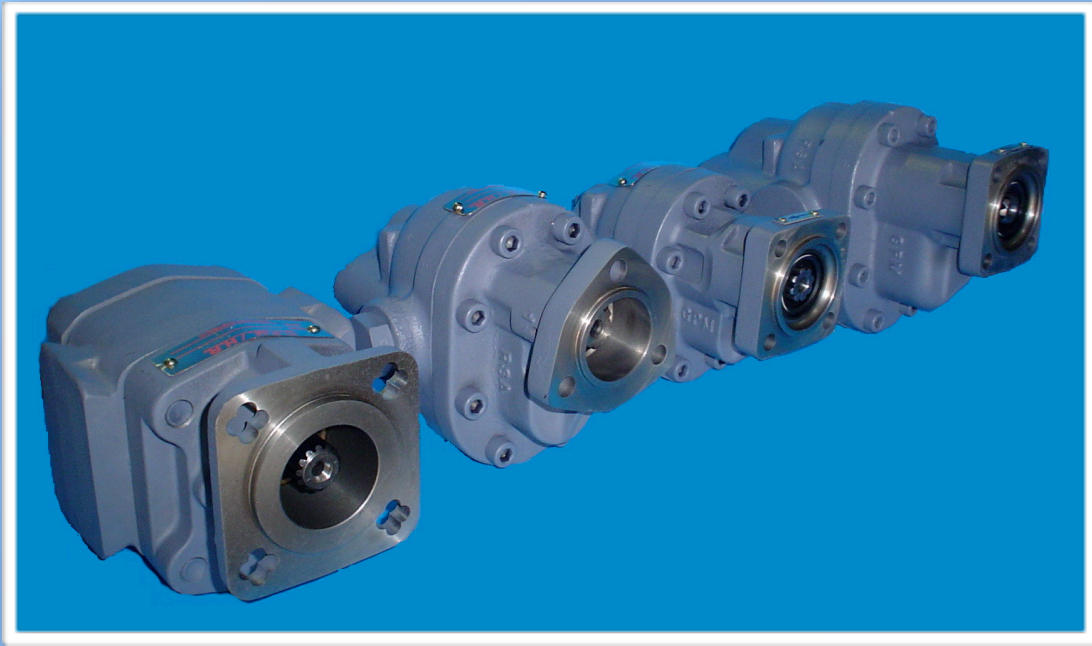


HYDRAULIC RESOURCE

Unit 1, 30-36 James St
Bellevue WA 6056
Ph (08) 9274 2835 Fax (08) 9274 2836
Mob 0438 883 397
Email: hydres@iinet.net.au
www.hydraulicresource.com.au

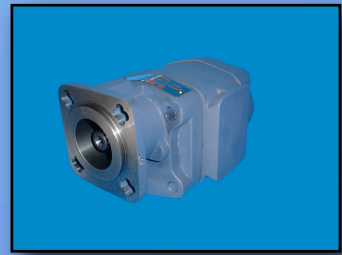
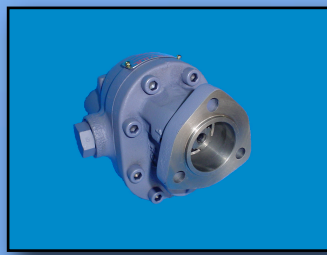
Hydraulic Gear Pump and Motor Manufacturers Direct Mounted PTO Truck Pumps



New range of heavy duty gears pumps to replace most popular brands in the transport industry.

The outstanding features of the GPM range of truck pumps include:

- High strength cast iron construction
- Proven bush journal bearing design
- Two piece design to aid pump stability under high pressure
- All internal parts are interchangeable. Drive shaft and front mounting flanges only vary between models
- Working pressures to 300 Bar (reduced on larger displacements)
- GTP3 series available in DIN, AUS, and UNI mounts. SAE "B" to be available in the future.
- 4 bolt cloverleaf pattern PTO mount pumps are available in the GP120 series. Seven sizes ranging from 16cc to 64cc, maximum pressure to 172 Bar.



For more products, visit www.hydraulicresource.com.au



GEAR PUMP MANUFACTURING (PTY) LTD

PTO TRUCK PUMP DIMENSIONS

Manufactured in South Africa

SHAFT SIZES
Ø36
8 SPLINE

DIN

SHAFT SIZES
Ø24.635
6 SPLINE

UNI

SHAFT SIZES
Ø22.047
8 SPLINE

AUS

SHAFT SIZES
13 SPLINE
2" DIAMETER

SAE B

SEC PORT SIZES OPPOSITE

CLOCKWISE

ANTI CLOCKWISE

TYPE	A					B	C	D
	DIN	UNI	AUS	SAE B				
24	164	170	181	163	98	83	143	
32	170	176	188	169	98	89	143	
40	177	183	194	175	98	96	143	
48	183	189	200	182	98	102	143	
52	177	183	194	185	106	96	157	
62	183	189	200	191	106	102	157	
73	184	200	214	184	115	104	172	
80	197	203	217	187	115	107	172	
88	200	206	220	190	115	110	172	
102	206	212	226	196	115	116	172	
118	213	219	233	203	115	123	172	
132	219	225	239	209	115	129	172	
147	226	232	246	216	115	136	172	

- Working Pressure up to 300 BAR
- High Strength Steel Gears
- Quality Compacted Graphite Bodies
- Heavy Duty Bushing Design
- Pressure Balanced Thrust Plates
- Interchangeable Parts



Cloverleaf PTO Mount

Type II
A = 3.56"

Uses Type II Shaft

PTO TRUCK RANGE	CODE									
	07	10	12	13	15	17	20	22	25	
FRAME GP230									<p>Please Note: Maximum pressures on UNI, AUS and SAE B style truck pumps are reduced due to driveshaft limitations.</p> <p style="color: red;">GTP3-062 max 280 Bar GTP3-072 max 250 Bar GTP3-080 max 230 Bar GTP3-088 max 210 Bar GTP3-102 max 180 Bar GTP3-118 max 160 Bar GTP3-132 max 140 Bar GTP3-147 max 130 Bar</p>	
PART NUMBER	GP3-024	GP3-032	GP3-040		GP3-048					
GEAR SIZE (IN)	0.75	1.00	1.25		1.50					
DISPLACEMENT (CM³/REV)	24	32	40		48					
PRESSURE (BAR)	300	300	300		300					
INLET PORT (BSPP)	1.00	1.00	1.00		1.00					
OUTLET PORT (BSPP x 2)	0.75	0.75	0.75		0.75					
WEIGHT (KG)	9.75	10.0	10.25		10.5					
FRAME GP250										
PART NUMBER			GP3-052		GP3-062					
GEAR SIZE (IN)			1.25		1.50					
DISPLACEMENT (CM³/REV)			52		62					
PRESSURE (BAR)			300		300					
INLET PORT (BSPP)			1.00		1.00					
OUTLET PORT (BSPP x 2)			1.00		1.00					
WEIGHT (KG)			10.5		12.0					
FRAME GP265										
PART NUMBER			GP3-073	GP3-080	GP3-088	GP3-102	GP3-118	GP3-132	GP3-147	
GEAR SIZE (IN)			1.25	1.38	1.50	1.75	2.00	2.25	2.50	
DISPLACEMENT (CM³/REV)			73	80	88	102	118	132	147	
PRESSURE (BAR)			270	270	270	240	240	220	200	
INLET PORT (BSPP)			1.25	1.25	1.25	1.25	1.25	1.50	1.50	
OUTLET PORT (BSPP x 2)			1.00	1.00	1.00	1.00	1.00	1.00	1.00	
WEIGHT (KG)			13.5	14.0	14.5	15.5	16.0	16.5	17	

Ordering Code

GTP3 - [Box 1] [Box 2] [Box 3] [Box 4]	Sample Code GTP3 - 73 P S L
[Box 1] Displacement in cc/rev	24,32,40,48,52,62,73,80,88,102,118,132,147
[Box 2] Pump Mounting Flange	Code D (Din) U (Uni) P (AUS) S (SAE "B")
[Box 3] Port Location	Side Ports (S) (Omit for Rear Ports)
[Box 4] Pump Rotation	Code R (CW or RH) L (CCW or LH)

Please Note: All stock pumps have UNF o-ring rear ports as standard. Side BSPP ports are available on request.

The above data are average results on a series of tests and are not necessarily representative of any single unit. Hydraulic Resource reserves the right to amend technical data without notice.