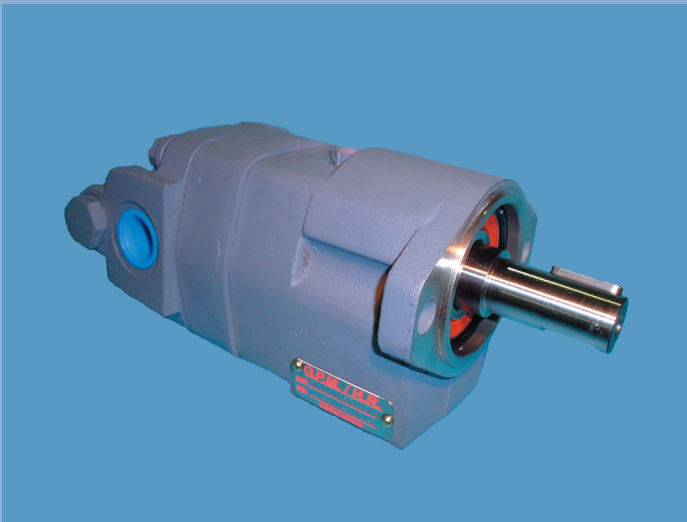


HYDRAULIC RESOURCE

Unit 1, 30-36 James St
Bellevue WA 6056
Ph (08) 9274 2835 Fax (08) 9274 2836
Mob 0438 883 397
Email: hydres@iinet.net.au

Hydraulic Gear Pump and Motor Manufacturers New Product Release



Hydraulic motors with built in over-hung load capabilities. Suitable for direct mounted fan drives and other applications.

Combination 2 Bolt "A" mounting front flange and bottom pad mounting face.

Long standout 1" keyed shaft, drilled and tapped 5/16" unf.

Maximum speed 3000 rpm.
Higher speeds on engineering approval.

Maximum pressure 3500 psi (240 Bar).

Displacement 10.2cc to 40.6cc, in 5 cc increments.

All motors are dual rotation.

Also available with built in over-run, anti-cavitation check valve in the rear cover. Motor rotation needs to be nominated.

1 1/16" unf o-ring side ports as standard.

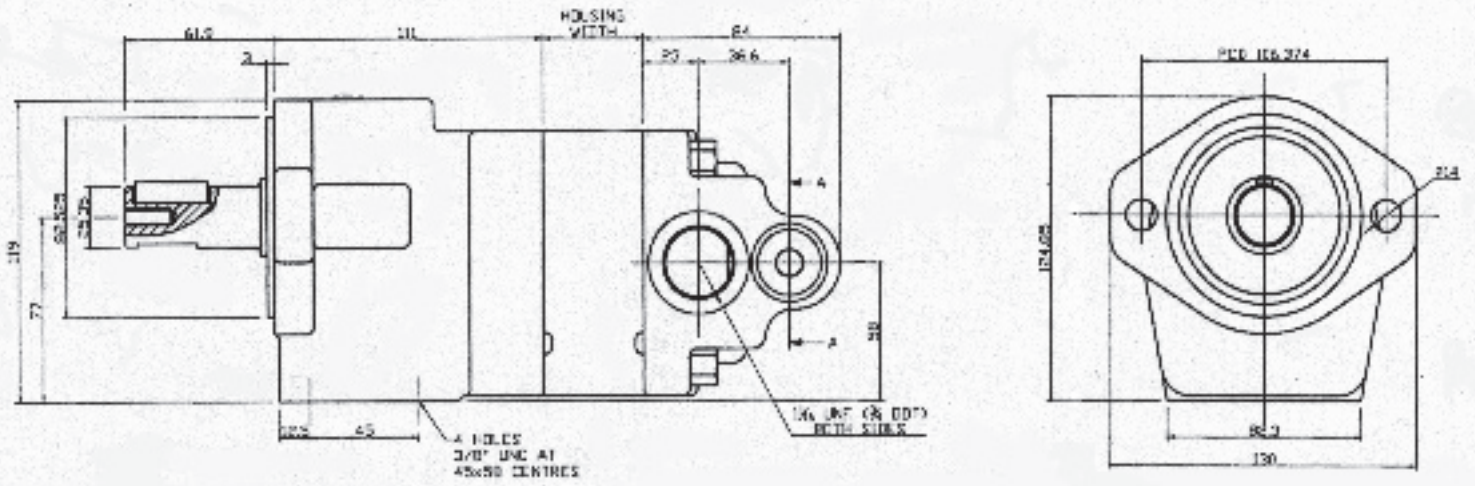
7/16" unf o-ring case drain.

Also suitable as a belt driven pump.

More product available at our website:

www.hydraulicresource.com.au





Ordering Code

GM215C 983 [Box 1] [Box 2] -32

[Box 1] Port End Cover

Code and Description

- VQ - 7/8" unf Side Ports
- VR - 1 1/16" unf Side Ports
- RS - 7/8" unf Rear Ports
- RQ - 1 1/16" unf Rear Ports
- VRR - Over-run check valve RH Rotation
- VRL - Over-run check valve LH Rotation

[Box 2] Displacement

Displacement	Housing Width	Average Torque at 1500rpm and maximum pressure	
		in/lbs	Nm
EB05 - 10cc (0.62in ³) 240 Bar (3500 psi)	22.8mm	290 in/lbs	21 Nm
EB07 - 15cc (0.93in ³) 240 Bar (3500 psi)	29.1mm	465 in/lbs	52 Nm
EB10 - 20cc (1.24in ³) 240 Bar (3500 psi)	35.4mm	640 in/lbs	72 Nm
EB12 - 25cc (1.55in ³) 240 Bar (3500 psi)	41.8mm	815 in/lbs	92 Nm
EB15 - 30cc (1.86in ³) 214 Bar (3100 psi)	48.1mm	870 in/lbs	98 Nm
EB17 - 35cc (2.17in ³) 200 Bar (2900 psi)	54.4mm	910 in/lbs	103 Nm
EB20 - 40cc (2.48in ³) 172 Bar (2500 psi)	60.8mm	905 in/lbs	102 Nm

Sample Code GM215C 983 VRR EB15-32